

WorkNC[®]

DENTAL

WorkNC Dental 5 axis gives Witech MIC 5 Dental Machine tools optimum flexibility...

The MIC 5 palletized machine benefits from the flexibility provided by WorkNC Dental, the easiest to use dental CAM system on the market. WorkNC Dental enables the speedy preparation and machining of any type of dental framework (caps, bridges, abutments, partials, removable frameworks, etc) in any kind of material (Zirconia, PMMA, Wax, Titanium, Cobalt Chrome, Emax, HI, etc).

WorkNC Dental provides optimized machining templates for each kind of material and each type of job.

Abutment machining on the MIC 5 machine is now improved by the new WorkNC Dental Implant module which can use the exact geometry of a connection from a library with a dedicated template for each type of connection.

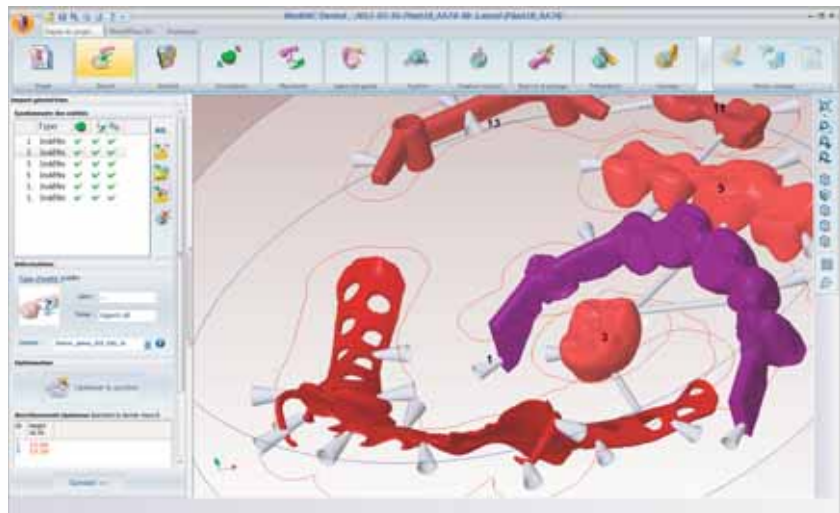
Contact details:

SESCOI INTERNATIONAL SAS

Boulevard du Général de Gaulle
71009 Macon Cedex
FRANCE

Tel. (+33) (0)385216621
Fax (+33) (0)385216622
international@sescoi.fr

www.workncdental.com



The advantages of WorkNC Dental:

- Open and fully automatic machining solution,
- Multi-process solution: bars, discs, blanks, plates
- Versatile machining solution with optimized machining sequences:
 - for the following prostheses materials: presintered zirconia, titanium, chrome cobalt, HIP zirconia, lithium disilicate, ...
 - by type of prosthesis: Copings, bridges, crowns, abutments, customized abutments, implant bridges, implant bars, ...
- Top range machining functionality:
 - high speed machining (HSM) toolpaths,
 - automatic 3 and 5 axis machining toolpaths,
 - full 3 and 5 axis collision management,
 - automatic undercut machining,
 - multiple support pin management...

WorkNC Dental 5 axis gives Witech MIC 5 Dental Machine tools optimum flexibility...



WorkNC Automation :

- Automated pallet handling system management: bar pusher, bar feeder, palletizer, ...
- Automated WorkNC Dental project management,
- Automatic scheduling:
 - allocation of "machining jobs" according to pallet availability,
 - "machining job" queue sequencing,
- Integrated WorkNC Dental database management (blanks, materials, types of prostheses, ...),
- Recognition of user operations (finished part removal, blank loading, ...),
- Transfer and automatic program execution on the machine,
- Monitoring of machining operations (completed, paused, ...)
- Direct connection to the machine tool controller (Fanuc, Heidenheim, ...)



MIC 5 Machine tool: Dental High Speed 5 Axis machining

- Compact 5 Axis machine for laboratories,
- High speed 5 Axis machining capabilities,
- Automatic tool changer (10/20) with sister tool management,
- Integrated paletization : Up to 48 palettes (16/48),
- Optimized machining templates for dental material for all types of dental job,
- Part support included for disk, plate and bar machining,
- Easy to manage with integrated touch screen control,
- Optimized disk utilization "over 40 unit"
- Machining time Soft material :7-8 min/ unit, hard material 15-18 min/unit)

Witech MIC 5 Dental Machine tool:

- Easy to use in your laboratory,
- Machining cost of dental framework reduced by high speed machining,
- Optimized Cobalt Chrome machining with optimized tool service life,
- Full flexibility with disk, plate and bar machining,
- Cost effective solution.

Contact details:

WITECH SA

Rue de la Pâle 28 - Case postale 59
 CH - 2854 Bassecourt - SWITZERLAND
 Tél.: +41 (0)32 427 00 40 - Fax: +41 (0)32 427 00 41
 lilian.meunier@witech-sa.ch

