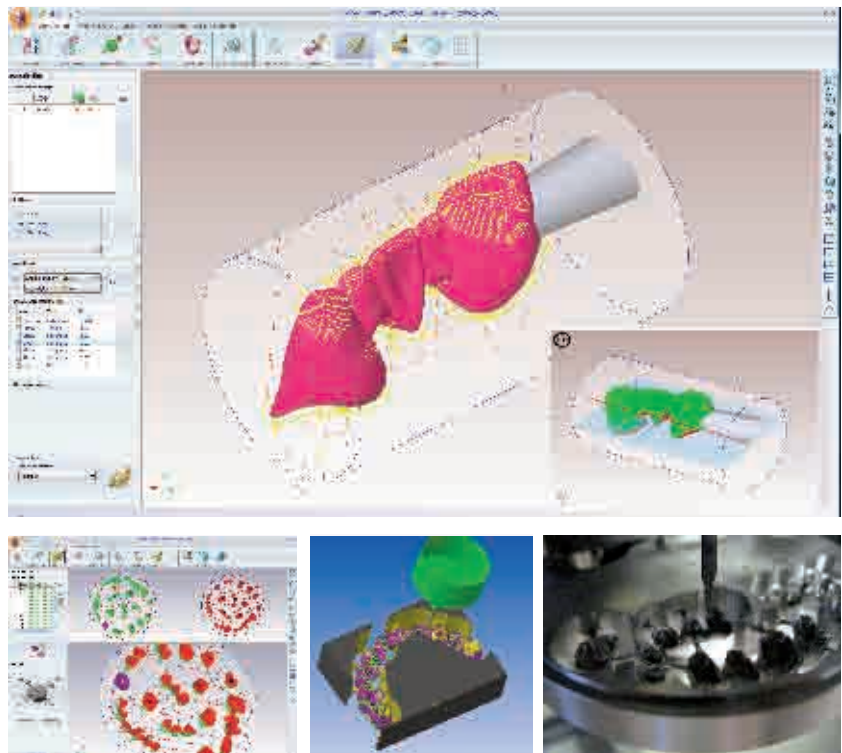


WorkNC Dental / Willemin Macodel Automatic machining of dental prostheses from bars

Optimize material costs and reduce production cycle times with bar machining. The WorkNC Dental / Willemin Macodel integrated solution offers new levels of performance for bar machining with full automation of the production process, from automated loading through to unloading of the dental prostheses.

Machining sequences have been specially optimized with machining times adapted for each type of material in order to guarantee optimal tool service life.



The advantages of WorkNC Dental:

- Open and fully automatic machining solution,
- Multi-process solution: bars, discs, blanks, plates
- Versatile machining solution with optimized machining sequences:
 - for the following prostheses materials: presintered zirconia, titanium, chrome cobalt, HIP zirconia, lithium disilicate, ...,
 - by type of prosthesis: Copings, bridges, crowns, abutments, customized abutments, implant bridges, implant bars, ...
- Top range machining functionality:
 - high speed machining (HSM) toolpaths,
 - automatic 3 and 5 axis machining toolpaths,
 - full 3 and 5 axis collision management,
 - automatic undercut machining,
 - multiple support pin management...

Contact details:

SESCOI INTERNATIONAL SAS

Boulevard du Général de Gaulle
71009 Macon Cedex
FRANCE

Tel. (+33) (0)385216621

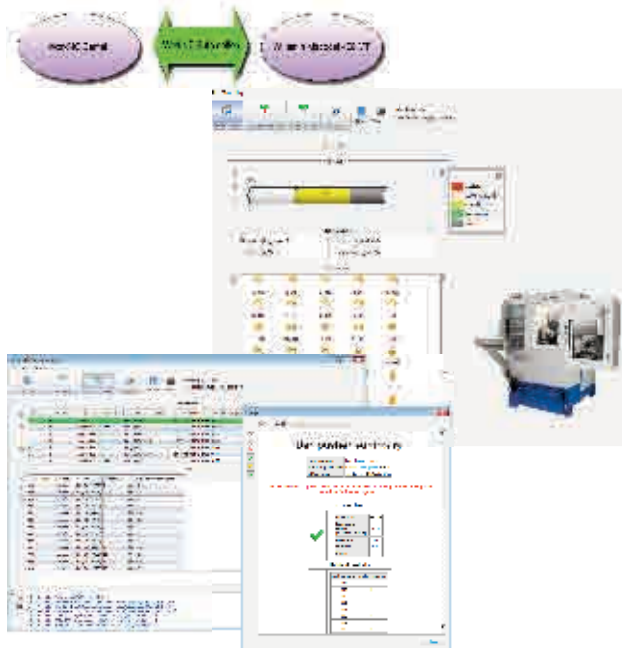
Fax (+33) (0)385216622

international@sescoi.fr

www.workncdental.com

WorkNC Dental / Willemin Macodel

Automatic machining of dental prostheses from bars



WorkNC Automation :

- Automated pallet handling system management: bar pusher, bar feeder, palletizer, ...
- Automated WorkNC Dental project management,
- Automatic scheduling:
 - allocation of "machining jobs" according to pallet availability,
 - "machining job" queue sequencing,
- Integrated WorkNC Dental database management (blanks, materials, types of prostheses, ...),
- Recognition of user operations (finished part removal, blank loading, ...),
- Transfer and automatic program execution on the machine,
- Monitoring of machining operations (completed, paused, ...)
- Direct connection to the machine tool controller (Fanuc, Heidenheim, ...)



Willemin Macodel 408B/408MT 5-8 axis:

The advantages of automatic bar machining:

- Abutment and cap machining in a single cycle,
- Fully automated process,
- Reduced machining costs,
- Automated collet changing according to the interface,
- Automated blank loading,
- Automated unloading with identification,
- Application of optimized machining sequences.

408B/408MT machine specifications:

- Simultaneous 5-axis machining,
- X-Y-Z axis movements: 250 - 200 - 300 mm,
- B axis rotation: 115°,
- A axis rotation: 360°,
- Spindle speed: 30,000 min⁻¹ (42,000 min⁻¹),
- Turning up to 6,000 min,
- 48 position tool carrier,
- Ø32 mm max. bar capacity.



Contact details: Willemin Macodel S.A.

Route de la Communance 59 - CH-2800 Delémont SWITZERLAND
Tel. +41 (0)32 427 03 03 - Fax +41 (0)32 426 55 30
info@willemin-macodel.com - www.willemin-macodel.com

