



# WorkNC<sup>®</sup> DENTAL

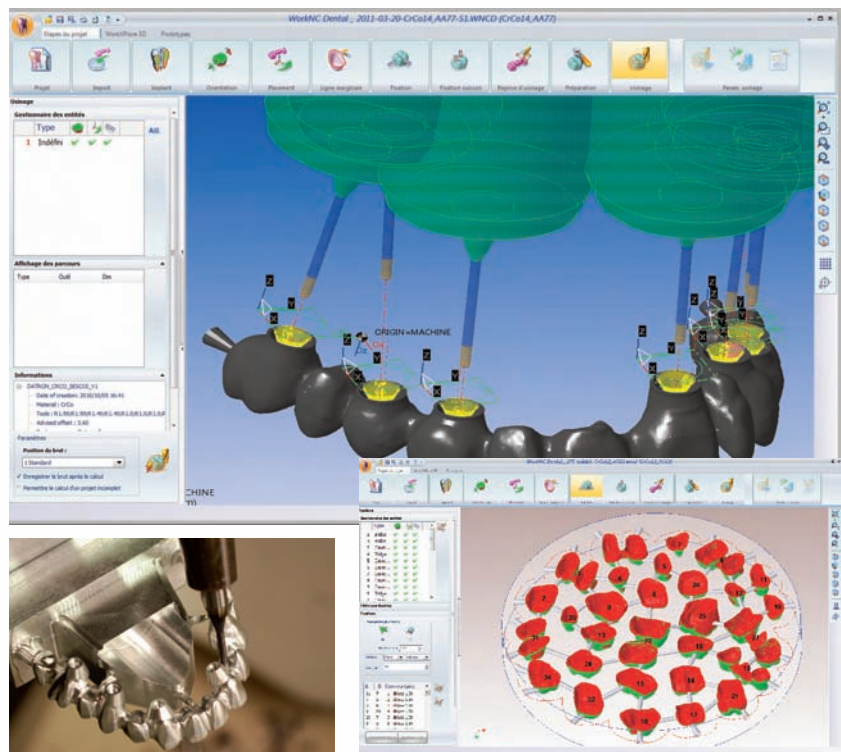
## Datron 5 axis High speed machine WorkNC Dental 5axis, the optimized solution for Cobalt Chrome and custom abutment milling ...

*The 5 axis Datron D5 machine tool benefits of the first class WorkNC Dental 5 axis toolpath for Cobalt Chrome and Titanium milling.*

*Dedicated 5 axis templates have been created for an optimum machining time and the best tool life service.*

*This template package gives the fastest and automatic way for machining the entire undercuts area both in intrados and extrados area.*

*The New Implant module of WorkNC Dental expands the capability of custom abutment milling with a fully automatic process based on the integrated CAM database of implant connection.*



### The advantages of WorkNC Dental:

- Open and fully automatic machining solution, Optimized blank preparation process,
- Multi-process solution: bars, discs, blanks, plates
- Versatile machining solution with optimized machining sequences:
  - for the following prostheses materials: presintered zirconia, titanium, chrome cobalt, HIP zirconia, lithium disilicate...
  - by type of prosthesis: Copings, bridges, crowns, abutments, customized abutments, implant bridges, implant bars...
  - Automatic margin line detection,
  - Optimized orientation in small blanks
- Top range machining functionality:
  - high speed machining (HSM) toolpaths,
  - automatic 3 and 5 axis machining toolpaths,
  - full 3 and 5 axis collision management,
  - automatic and multiple support pin management.

### Contact details:

#### **SESCOI INTERNATIONAL SAS**

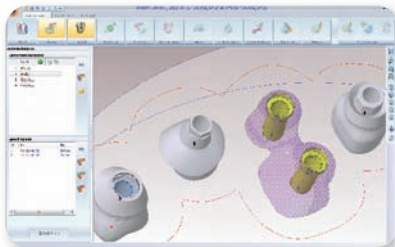
Boulevard du Général de Gaulle  
71009 Macon Cedex  
FRANCE

Tel. (+33) (0)385216621  
Fax (+33) (0)385216622  
[international@sescoi.fr](mailto:international@sescoi.fr)

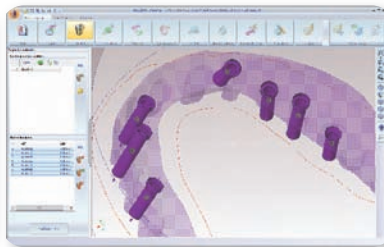
[www.workncdental.com](http://www.workncdental.com)

# Datron 5 axis High speed machine

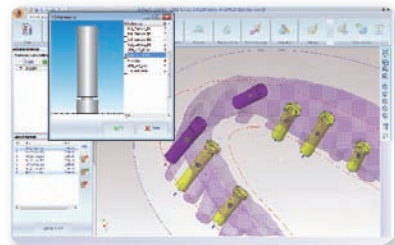
## WorkNC Dental 5 axis, the optimized solution for Cobalt Chrome and custom abutment milling ...



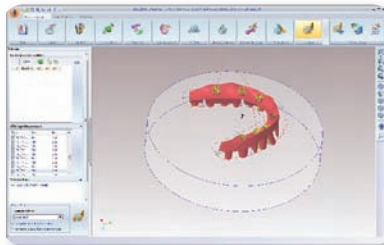
WorkNC Dental Implant module step



Automatic recognition or import of xml positioning file



Interactive change of implant references



Automatic machining templates allocation linked to implant reference and materials

### WorkNC Dental Custom Abutment module :

WorkNC Dental Custom abutment module gives the Datron D5 machine the capability to mill your custom abutments using the real surface dimensions and tolerances of implant connections.

### So easy, it can be used by non experienced technicians

One, single step in WorkNC Dental manages all features in the implant module,

# DATRON



### DATRON D5

**Compact Milling/Grinding Machine for the economic manufacturing of high quality, aesthetic dental restoration**

The open DATRON CAD/CAM System D5 serves for manufacturing all conventional dental restorations like crowns, bridges, inlays, abutments, telescopes, models and implant-supported work.

This High Speed 5-Axis Machine offers an automated workpiece handling, an innovative tool changer as well as easy operation on the smallest installation space.

Specifically conceived for future oriented materials and applications in dental laboratories, it is very efficient and at the same time cost-effective because of its high productivity.

**The Datron D5 is a high-performance Milling/grinding machine built specifically for the Dental industry and has a very small space requirement.**

The machine includes:

- Rotary and swivel axis for 5-axis simultaneous machining
- Apple iPad for easy user interface
- 13-station tool magazine with tool-length and tool-break sensors
- Integrated 8-blank automation (optional)
- Temperature-controlled spindle and drives
- Minimum coolant lubrication
- Chip-containment for any material type and optional dust extraction

Contact details:

**DATRON AG**

In den Gänsäckern 5  
Germany - 64367 Mühlthal  
Phone: +49 (0) 61 51 - 14 19 0  
Fax: +49 (0) 61 51 - 14 19 - 69  
[www.datron.de](http://www.datron.de)



**Sescoi**  
[www.sescoi.com](http://www.sescoi.com)