



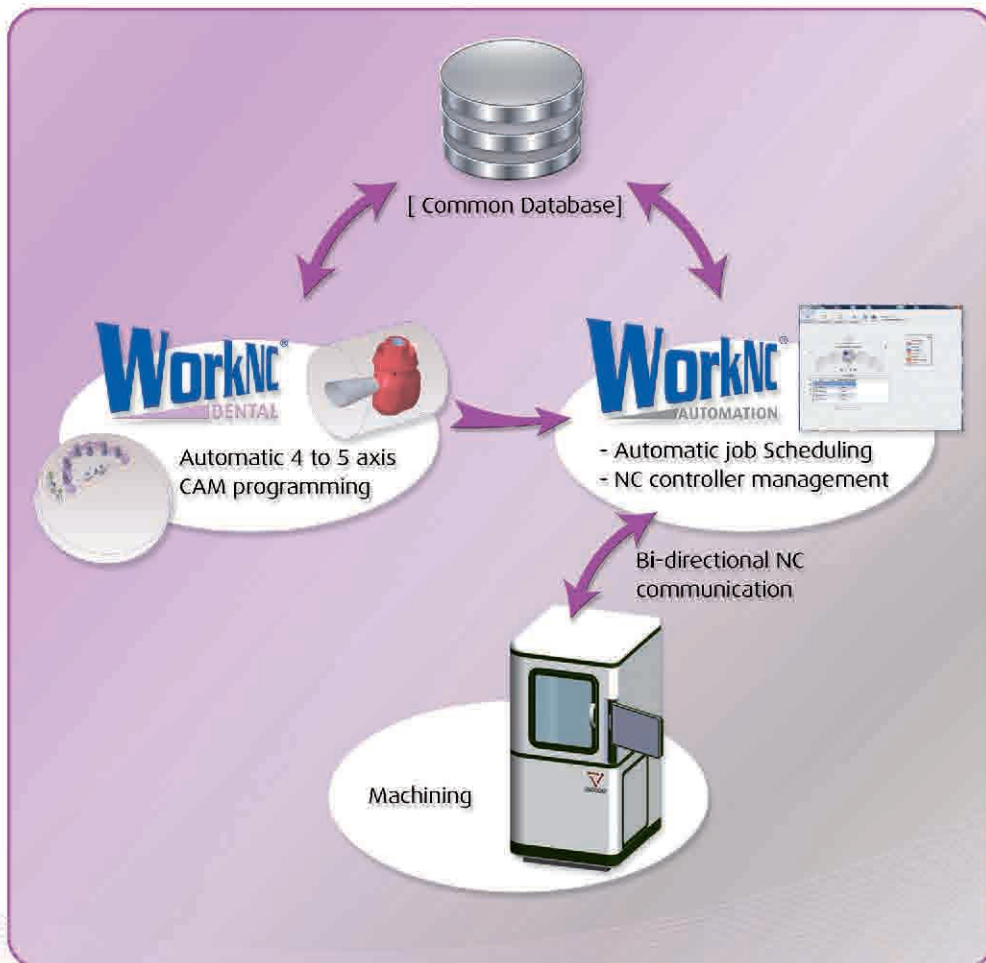
WorkNC[®]

AUTOMATION

WorkNC Dental Automation

enables fully automated processing from CAM programming through to NC Controller loading.

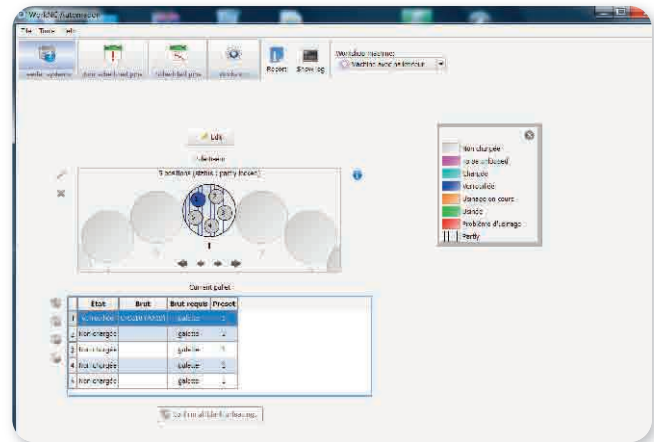
WorkNC Dental Automation is an independent software solution that automatically manages the NC controller of the machine tool. WorkNC Dental Automation totally eliminates operator intervention.



WorkNC Dental Automation enables fully automated processing from CAM programming through to NC Controller loading.

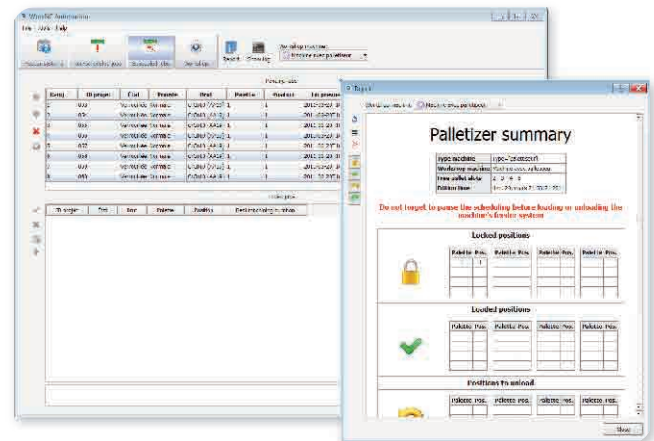
Fully automatic and 100% secure:

- WorkNC Dental Automation is always connected to the machine controller with a bi-directional communication system which allows complete control of the machine tool.
 - Job loading/unloading,
 - Error reporting,
 - Auto switch on/off...
- A common database between WorkNC Dental and the Dental Automation module avoids any risk of error due to operator manipulation (blank palette number, NC file name...)



Maximum flexibility and productivity for Dental Labs:

- WorkNC Dental Automation allows operators to focus on technical aspects of their jobs by removing all the constraints associated with machine-tool management.
- Whatever the laboratory workflow in use, WorkNC Dental Automation ensures uninterrupted machining.

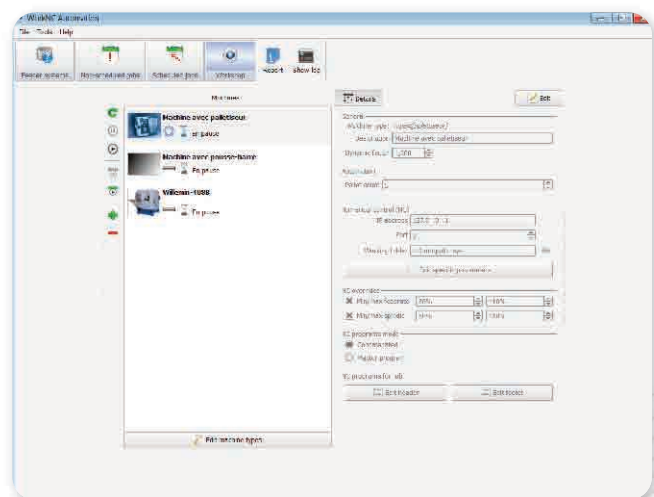


Suitable for all machining processes:

- All kinds of machine automation can be managed (Bar pusher, Palettisation...).
- All pre- and post-machining operations can be customized and managed automatically (bar cutting, control...)

Compatible with all types of machine tools:

- WorkNC Dental Automation has an open API which ensures full compatibility with all types of controllers (Heidenheim, Siemens, Fanuc, Fast cybelec...).



Contact details:

SESOCI INTERNATIONAL SAS

Boulevard du Général de Gaulle - 71009 Macon Cedex - FRANCE
Tel. (+33) (0)385216621 - Fax (+33) (0)385216622
international@sescoi.fr - www.workncdental.com